



Blackburn Central
High School

New starter guide




Ofsted
Good
Provider

Oak 
Learning Partnership



*‘Providing every student
with a caring, inclusive
and safe learning environment
and promoting a culture of
academic excellence and
outstanding achievement.’*



Contents

HEADTEACHER'S WELCOME	4
THE SCHOOL DAY	5
SCHOOL MEALS	7
PARENTAL COMMUNICATIONS	7
UNIFORM & EQUIPMENT	8
CURRICULUM	10
EXTRA CURRICULAR	10
HOME LEARNING	11
TRAVELLING TO SCHOOL	11
BEHAVIOUR EXPECTATIONS	12
CONTACT US	14
TERM DATES	15





Headteacher's welcome

Welcome to Blackburn Central High School (BCHS).

BCHS is a school in the heart of the community and I'm delighted to welcome all of our new families. The opportunities and prospects for the young people of this town are enormous, and we see it as our moral purpose to do everything we can to prepare our students for their successful and happy futures.

Moving from a primary to a secondary school can be a worrying process. After knowing everybody in a smaller school, graduating to a large secondary school can feel isolating. We pride ourselves on doing everything we can to reassure the worried, inspire them and set them off on a fantastic new journey. There is a great team of caring, dedicated and experienced staff at BCHS ready to support every student and welcome you into our family. Working in a school is a privilege, and we love what we do!

Our school days stay with us forever: the sport, the friendships, the trips, the break ups, the clubs and make ups; the inspirational teachers, the lessons learnt and the dreams ignited. I believe that BCHS is a brilliant place in which those amazing memories can be forged. We provide a safe, caring and supportive environment which helps young people learn. We help to shape their ambition, build their knowledge and their achievements, whilst developing leadership and employability skills. BCHS is a place where dreams come true!

I very much look forward to working with you to achieve our shared ambitions.

Mrs S Hussain





The school day

DAILY TIMETABLE	
8.45AM-8.50AM	STUDENTS' MORNING GREETING, EQUIPMENT AND UNIFORM CHECK
8.50AM - 9.10AM	PERIOD 1 - PROGRESS TIME
9.10AM-10.10AM	PERIOD 2
10.10AM-11.10AM	PERIOD 3
11.10AM-11.25AM	BREAK
11.25AM-12.25PM	PERIOD 4
12.25PM-12.55PM	KS4 LUNCH
12.25PM-1.25PM	PERIOD 5 KS3
12.55PM-1.55PM	PERIOD 5 KS4
1.25PM-1.55PM	KS3 LUNCH
1.55PM-2.55PM	PERIOD 6 (DISMISSAL OF TOP FLOOR FROM 2.50PM)

PUNCTUALITY

It is important to be on time for school and to lessons. If you are late to school you must go to reception for your attendance mark. A member of the pastoral team will collect you and check you have your uniform and equipment before lessons. If you arrive after progress time (9am) this will have a negative effect on your overall attendance as you will miss the morning mark. Any student who is late will be given a P-Point Punctual and a 30 minute detention will be issued for the same evening (2.55pm-3.25pm).

School is open before progress time for students to access breakfast club and the uniform/equipment store, where items of uniform and equipment can be borrowed by students to ensure they are not issued with a P-Point Prepared for missing items during morning checks. These items must be returned or students/parents will be charged on their online SCOPAY accounts.

ASSEMBLY

Year seven has assembly once a week in the heart space. The assembly is led by the pastoral team and external speakers come into school to deliver important messages.



The school day

PROGRESS TIME

In year seven our pupils have an extensive programme of activities to study during progress time. These activities include guided reading, numeracy, votes for school and personal development tasks. Students will also take part in digital literacy skills.

Parents or carers will be able to meet their child's progress tutor in September when we host our year seven settling in evening. The evening is a chance for parents to see our amazing school and speak with our staff about how well their child has settled into secondary school. It is also a time to be able to raise any concerns you may have.

SCHOOL ABSENCE/ILLNESS

Please contact the school on 01254 505700 to let us know if your child is ill and will be absent from school. We have a dedicated attendance officer, Mrs Owen, who may call you to enquire about absence. Term time holidays are not permitted, except by special permission from our headteacher, Mrs Hussain. Should your child have a medical appointment, please ensure you make it outside of school hours where possible.

We take attendance and punctuality very seriously at BCHS. Poor attendance has a huge impact on your child's learning, as well as their friendships and social time at school. As such, we monitor absence very closely and liaise with families where we identify concerns.

DAYS MISSED		LESSONS MISSED
0	100%	0
3.8	98%	19
7.6	96%	38
9.5	95%	48
19	90%	95
28.5	85%	143
38	80%	190



School meals

Breakfast club is open to all BCHS pupils from 8am and serves a variety of breakfast items, which are free for ALL.

Hot and cold snacks are served at break time. At lunch there are hot and cold options in both our main serving area, as well as the canopy serving area. Pupils pay by pre-loading their ID cards (see below). Students can also bring packed lunches to eat in the heart space.

Free school meals - if your child is entitled to the free school meal allowance, it is automatically loaded onto their ID cards. This card can be used to purchase one of our meal deals.

SCOPAY

BCHS uses a system called Scopay for school payments. Parents download an app and can preload lunch money onto their child's account and pay for other items such as school trips etc. All new students will receive a letter on transition day giving you details of how to register with Scopay. Please ensure you do this prior to your child starting in September and ensure their account is loaded with money should they wish to buy food.

Parental communication

Parents and carers play a crucial role in ensuring their child achieves at the highest level and makes the most of their time at BCHS.

We provide regular communication with parents to ensure they are up to date with their child's progress. We mainly do this through an app called Arbor, which is our main method of communication with parents.

Parents will receive a link on the first day of school with details of how to register. It is very important that you download the app and register when prompted to do so.



Uniform

At BCHS we have high expectations of uniform and personal appearance. We expect all students to wear their uniform and be smart and presentable at all times, both on the school premises and when representing school off site.

Uniform checks are undertaken each day and students not adhering to our uniform policy are subject to corrective action. Items that require school branding are listed clearly below.

BLAZER

Grey blazer with purple piping. Logo on the left chest, flaps on pockets. (Branded item only)

JUMPER

Purple jumper with grey stripe around the neck. (Must have grey stripe)

TIE

Purple, grey and white stripe tie. (Branded item only)

BAG

Sensible school bag to fit A4 folders.

TROUSERS

Grey formal school trousers. Fashion belts are not permitted.

SKIRT

Purple and grey tartan, knee length, stitched down box pleated skirt. Worn with either opaque black tights (minimum 80 denier) or plain black ankle socks. (Must be correct tartan)

SHIRT

Long or short sleeve plain white formal school shirt with collar.

SHOES

Plain black flat formal shoes. No boots, trainers or trainer style shoes allowed. Worn with plain black or grey socks.

HIJAB

Two-piece purple head scarf, plus year badge worn on lapel, worn in addition to school tie. (Optional, must be purple)

OUTDOOR WINTERWEAR

Plain dark coloured coat. Scarf, hat and gloves are recommended for outdoor use and can be any dark colour. (Recommended)





Uniform

PE KIT

RUGBY TOP

Half sleeved purple and grey quarter rugby top with black collar and black school logo on left hand side.
(Branded item only)

SPORTS SOCKS

Purple football socks with black hoops.
(Compulsory)

SHORTS/SKORT

Plain black shorts/skort.
(Compulsory)

TRACKSUIT BOTTOMS

Plain black tracksuit bottoms.
(Optional)

HOODED TRACK TOP

Plain black hooded tracksuit top.
(Optional)

FOOTWEAR

Trainers to be worn for indoor use, pumps not allowed. Football boots required for outside lessons on grass.

FASHION

HAIR

Should be sensible and a natural colour. No lines shaved in hair or eyebrows.

MAKEUP

No makeup may be worn in years 7-9. Years 10-11 are allowed to wear minimal eyeliner. No other makeup or fake tan is allowed. False nails, false lashes and nail varnish are not permitted, nor is the use of fashion contact lenses.

JEWELLERY

One pair of small earrings may be worn (studs or sleepers) in ear lobes plus a wrist watch (not a smart watch). No other jewellery or piercings are allowed.

EQUIPMENT

All pupils must have a pencil case containing a black pen, pencil, ruler, eraser, sharpener and pencil crayons, as well as a scientific calculator.

Regular equipment checks are undertaken during progress time.

Please ensure all uniform and PE kit are labelled with your child's name and progress group.

UNIFORM IS AVAILABLE FROM:

Whittakers Schoolwear
20-26 Church Street
Blackburn
BB1 5AL
Tel: 01254 676047

The School Uniform Company
Unit 1 River Street
Blackburn
BB1 1EG
Tel: 01254 658787

PRELOVED UNIFORM IS SOMETIMES AVAILABLE FROM:

Rummage Rescuers
2-3 Thomas Street
Blackburn
BB2 1NR
Tel: 01254 264093



Curriculum

In year seven students study a broad and balanced curriculum. They have up to four hours per week of our core subjects, English, maths and science. In addition, they study all of the humanities subjects - geography, history and RE. All students in year seven also have the opportunity to study Spanish and experience a vast range of creative and technology subjects.

At BCHS we operate a carousel for some subjects, meaning that students will experience a block of lessons in one subject over a set number of weeks before moving onto an other subject in that faculty area. This year students will study art, drama and media as part of our creative arts curriculum. They will also carousel around our technology subjects of textiles, engineering and food technology. Our year seven curriculum also includes computer science and physical education (PE), which all students study.

Our foundation group in year seven also has the opportunity to study life skills on top of their normal curriculum, to ensure they make the best progress whilst at BCHS.

If you would like more details regarding the curriculum please contact the year team.

Extra curricular

At BCHS we have a large range of extra curricular opportunities available during lunchtimes and also after school.

All of our clubs are free to attend and students who do attend clubs are rewarded with extra achievement points throughout the year. Joining a club can be a great way to meet new friends and is a fantastic way to represent BCHS in fixtures and competitions against other schools. An example of the clubs we run can be found below.

- CHESS
- HOMEWORK
- ART
- LIBRARY
- DEBATING
- FILM
- CULTURE
- FITNESS
- BADMINTON
- FOOTBALL
- CRICKET

Home learning

At BCHS we recognise that learning does not stop when the school bell rings at the end of the day. It is important for our students to continue their love for learning outside of the classroom. Homework and pre-lesson learning tasks are set by our teachers on digital platforms for students to complete at home. We use Google Classroom to set work for students as this allows parents and guardians to log in and see when work has been set and completed. Each subject area will set homework at different points throughout the week, but it is expected that one piece of homework is completed each night in year seven. Alongside Google Classroom, staff may also set homework and pre-lesson learning tasks on Dr Frost Maths and Seneca.

Students who show a good attitude to their homework are awarded positive achievement points called 'Homework Heroes'. You will be able to see when these have been awarded on the Arbor app.

Travelling to school

BCHS is located near to Royal Blackburn Hospital and is easily accessible by public transport or car.

TRAVELLING BY BUS

There is no dedicated school bus service, however there are bus stops very close to school. There is the Haslingden Road (KFC) stop and Grimshaw Park (Blackburn Central High School) stop that are serviced by the 12A and 12C Blackburn circulars, the 481 Blackburn-Bury and the 22 Shadsworth-Clitheroe Centre. Many other bus services stop at Royal Blackburn Hospital, which is a short walk from school.

TRAVELLING BY CAR

Follow signs for Royal Blackburn Hospital from junction 5 of the M65 or Blackburn town centre. The entrance to school is on Haslingden Road and is sign posted. There is a drop off area within the school grounds but please note that this gets extremely busy and should not be used as a waiting area.





Behaviour expectations

It is expected that parents/carers will be a positive role model for their child/children, knowing and supporting the school by ensuring that their child is ready to learn. They can do this by, making sure that their child:

- Arrives on time and is prepared to learn.
- Brings appropriate equipment such as PE kit and any other necessary equipment, a suitable bag to carry books and any equipment needed during the school day.
- Is aware of the need to be polite, courteous and respectful to everyone on the school site, forging positive, supportive and respectful relationships with all staff.
- Is encouraged to want to learn and meet high expectations.
- Wears the school uniform correctly.
- Switches off any mobile devices (including phones) at the school gate. These must be kept out of sight and remain switched off until the end of the day when students are off site.
- Ensure students complete schoolwork to a high standard, including homework/independent learning.



MOBILE PHONE POLICY

No electronic device, including mobile phones and smart watches, are allowed to be used, seen or heard in school at any time.

Should students be seen with an electronic device they will be confiscated and a parent will be required to come to school to collect it.



Behaviour expectations cont...

Students who fail to follow our school behaviour policy will be issued with the following :

- P-Point Punctual - 30 minute detention for any lateness to school/lesson
- P-Point Polite - 30 minute detention for any behaviours which are deemed to be disrespectful or impolite on the corridors and during social times.
- P-Point Prepared - 30 minute detention for failure to have the correct uniform or equipment.
- C3 - During lessons students are given opportunities to correct any inappropriate behaviour. A C1 - verbal warning, C2 - final verbal warning will be given before a C3, which means the student has failed to follow our expected behaviour and will be issued a 30 minute detention.
- C4 - If a student continues to display unacceptable behaviour they will be removed from the lesson and placed into our RESOLVE unit for the rest of the lesson. This will result in a 60 minute detention.

All detentions take place on the same day:

30 minutes - 2.55pm - 3.25pm

60 minutes - 2.55pm - 3.55pm

An automated email from our ARBOR system will be sent when the incident is logged by staff to alert parents / guardians.

Repeated failure to follow our behaviour policy / specific one off serious incidents of unacceptable behaviour will result in further sanctions. Further sanctions include students being booked into our internal exclusion unit and external suspensions.





Contact us

Your child will have a number of staff they can contact should they have any queries when they start school. Their Progress Tutor will be the first point of contact but they will also have a Head of Year and a Pastoral Manager, all of whom are happy to be contacted or can usually be found in the key stage three office. For general enquiries please contact the school reception on the contact details below.

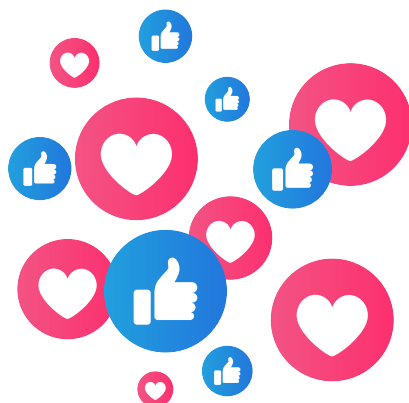
School reception: 01254 505700
School email: info@bchs.co.uk
School website: www.bchs.co.uk

Keep up to date

We regularly post on our social media channels so would urge you to follow us to keep up to date with the latest achievements and developments at school.

You can find us on Facebook and Instagram. Just search for Blackburn Central High School to find us and make sure to hit that follow button.

We also send out termly newsletters at the end of each term. Please ensure you are registered on Arbor to receive the links to the newsletters.





Term dates

AUTUMN TERM 2025	
Students return	Wed 3 September 2025
Mid term closure	Mon 27-Fri 31 October 2025
Students return	Mon 3 November 2025
Closure (after school)	Thur 18 December 2025
SPRING TERM 2026	
Students return	Tue 6 January 2026
Mid term closure	Mon 16-Fri 20 February 2026
Students return	Mon 23 February 2026
EID closure	Fri 20 March 2026
Students return	Mon 23 March 2026
Closure (after school)	Fri 27 March 2026
SUMMER TERM 2026	
Students return	Mon 13 April 2026
May Day closure	Mon 4 May 2026
Students return	Tue 5 May 2026
Mid term closure	Mon 25-Fri 29 May 2026
Students return	Mon 1 June 2026
Closure (after school)	Fri 17 July 2026

[illegible]