



Blackburn Central
HIGH SCHOOL

New starter guide




Ofsted
Good
Provider



*‘Providing every student
with a caring, inclusive
and safe learning environment
and promoting a culture of
academic excellence and
outstanding achievement.’*



Contents

HEADTEACHER'S WELCOME	4
THE SCHOOL DAY	5
SCHOOL MEALS	7
PARENTAL COMMUNICATIONS	7
UNIFORM & EQUIPMENT	8
CURRICULUM	10
EXTRA CURRICULAR	10
HOME LEARNING	11
TRAVELLING TO SCHOOL	11
BEHAVIOUR EXPECTATIONS	12
CONTACT US	14
TERM DATES	15





Headteacher's welcome

Welcome to Blackburn Central High School (BCHS).

BCHS is a school in the heart of the community and I'm delighted to welcome all of our new families. The opportunities and prospects for the young people of this town are enormous, and we see it as our moral purpose to do everything we can to prepare our students for their successful and happy futures.

Moving from a primary to a secondary school can be a worrying process. After knowing everybody in a smaller school, graduating to a large secondary school can feel isolating. We pride ourselves on doing everything we can to reassure the worried, inspire them and set them off on a fantastic new journey. There is a great team of caring, dedicated and experienced staff at BCHS ready to support every student and welcome you into our family. Working in a school is a privilege, and we love what we do!

Our school days stay with us forever: the sport, the friendships, the trips, the break ups, the clubs and make ups; the inspirational teachers, the lessons learnt and the dreams ignited. I believe that BCHS is a brilliant place in which those amazing memories can be forged. We provide a safe, caring and supportive environment which helps young people learn. We help to shape their ambition, build their knowledge and their achievements, whilst developing leadership and employability skills. BCHS is a place where dreams come true!

I very much look forward to working with you to achieve our shared ambitions.

Mrs S Hussain





The school day

DAILY TIMETABLE	
8.30AM - 9AM	PROGRESS TIME
9AM-10AM	PERIOD 1
10AM-11AM	PERIOD 2
11AM-11.15AM	BREAK
11.15AM-12.15PM	PERIOD 3
12.15PM-1.15PM	PERIOD 4
1.15PM-1.50PM	LUNCH
1.50PM-2.50PM	PERIOD 5
2.50PM-3.50PM	EXTRA CURRICULAR CLUBS

Students are expected to arrive at school by 8.30am, although we do operate a FREE breakfast club, which opens at 8am each day. All students are welcome to come and choose a free breakfast from a selection of items.

PUNCTUALITY

It is important to be on time for school and to lessons. If you are late to school you must go to reception for your attendance mark. If you arrive after progress time (9am) this will have a negative effect on your overall attendance as you will miss the morning mark.

ASSEMBLY

Year seven has assembly once a week in the heart space. The assembly is led by the pastoral team and external speakers come into school to deliver important messages.



The school day

PROGRESS TIME

In year seven our pupils have an extensive programme of activities to study during progress time. These activities include guided reading, numeracy, votes for school and personal development tasks. Students will also take part in digital literacy skills.

Parents or carers will be able to meet their child's progress tutor in September when we host our year seven settling in evening. The evening is a chance for parents to see our amazing school and speak with our staff about how well their child has settled into secondary school. It is also a time to be able to raise any concerns you may have.

SCHOOL ABSENCE/ILLNESS

Please contact the school on 01254 505700 to let us know if your child is ill and will be absent from school. We have a dedicated attendance officer, Mrs Owen, who may call you to enquire about absence. Term time holidays are not permitted, except by special permission from our headteacher, Mrs Hussain. Should your child have a medical appointment, please ensure you make it outside of school hours where possible.

We take attendance and punctuality very seriously at BCHS. Poor attendance has a huge impact on your child's learning, as well as their friendships and social time at school. As such, we monitor absence very closely and liaise with families where we identify concerns.

DAYS MISSED		LESSONS MISSED
0	100%	0
3.8	98%	19
7.6	96%	38
9.5	95%	48
19	90%	95
28.5	85%	143
38	80%	190



School meals

Breakfast club is open to all BCHS pupils from 8am and serves a variety of breakfast items, which are free for everybody.

Hot and cold snacks are served at break time. At lunch there are hot and cold options in both our main serving area, as well as the canopy serving area. Pupils pay by pre-loading their ID cards (see below). Students can also bring packed lunches to eat in the heart space.

Free school meals - if your child is entitled to the free school meal allowance, it is automatically loaded onto their ID cards. This card can be used to purchase one of our meal deals.

SCOPAY

BCHS uses a system called Scopay for school payments. Parents download an app and can preload lunch money onto their child's account and pay for other items such as school trips etc. All new students will receive a letter on transition day giving you details of how to register with Scopay. Please ensure you do this prior to your child starting in September and ensure their account is loaded with money should they wish to buy food.

Parental communication

Parents and carers play a crucial role in ensuring their child achieves at the highest level and makes the most of their time at BCHS.

We provide regular communication with parents to ensure they are up to date with their child's progress. We mainly do this through an app called Arbor, which is our main method of communication with parents.

Parents will receive a link on the first day of school with details of how to register. It is very important that you download the app and register when prompted to do so.



Uniform

At BCHS we have high expectations of uniform and personal appearance. We expect all students to wear their uniform and be smart and presentable at all times, both on the school premises and when representing school off site.

Uniform checks are undertaken each day and students not adhering to our uniform policy are subject to corrective action. Items that require school branding are listed clearly below.

BLAZER

Grey blazer with purple piping. Logo on the left chest, flaps on pockets. (Branded item only)

JUMPER

Purple jumper with grey stripe around the neck. (Must have grey stripe)

TIE

Purple and grey tie. (Branded item only)

BAG

Sensible school bag to fit A4 folders.

TROUSERS

Grey formal school trousers. Fashion belts are not permitted.

SKIRT

Purple and grey tartan, knee length, stitched down box pleated skirt. Worn with either opaque black tights (minimum 80 denier) or plain black ankle socks. (Must be correct tartan)

SHIRT

Long or short sleeve plain white formal school shirt with collar.

SHOES

Plain black flat formal shoes. No boots, trainers or trainer style shoes allowed. Worn with plain black or grey socks.

HIJAB

Two-piece purple head scarf, plus year badge worn on lapel, worn in addition to school tie. (Optional, must be purple)

OUTDOOR WINTERWEAR

Plain dark coloured coat. Scarf, hat and gloves are recommended for outdoor use and can be any dark colour. (Recommended)





Uniform

PE KIT

RUGBY TOP

Half sleeved purple and grey quarter rugby top with black collar and black school logo on left hand side.
(Branded item only)

SPORTS SOCKS

Purple football socks with black hoops.
(Compulsory)

SHORTS/SKORT

Plain black shorts/skort.
(Compulsory)

TRACKSUIT BOTTOMS

Plain black tracksuit bottoms.
(Optional)

HOODED TRACK TOP

Plain black hooded tracksuit top.
(Optional)

FOOTWEAR

Trainers to be worn for indoor use, pumps not allowed. Football boots required for outside lessons on grass.

FASHION

HAIR

Should be sensible and a natural colour. No lines shaved in hair or eyebrows.

MAKEUP

No makeup may be worn in years 7-9. Years 10-11 are allowed to wear minimal eyeliner. No other makeup or fake tan is allowed. False nails and nail varnish are not permitted, nor is the use of fashion contact lenses.

JEWELLERY

One pair of small earrings may be worn (studs or sleepers) in ear lobes plus a wrist watch (not a smart watch). No other jewellery or piercings are allowed.

EQUIPMENT

All pupils must have a pencil case containing a black pen, pencil, ruler, eraser, sharpener and pencil crayons, as well as a scientific calculator.

Regular equipment checks are undertaken during progress time.

Please ensure all uniform and PE kit are labelled with your child's name and progress group.

UNIFORM IS AVAILABLE FROM:

Whittakers Schoolwear
20-26 Church Street
Blackburn
BB1 5AL
Tel: 01254 676047

The School Uniform Company
Unit 1 River Street
Blackburn
BB1 1EG
Tel: 01254 658787

PRELOVED UNIFORM IS SOMETIMES AVAILABLE FROM:

Rummage Rescuers
2-3 Thomas Street
Blackburn
BB2 1NR
Tel: 01254 264093



Curriculum

In year seven students study a broad and balanced curriculum. They have up to four hours per week of our core subjects, English, maths and science. In addition, they study all of the humanities subjects - geography, history and RE. All students in year seven also have the opportunity to study Spanish and experience a vast range of creative and technology subjects.

At BCHS we operate a carousel for some subjects, meaning that students will experience a block of lessons in one subject over a set number of weeks before moving onto an other subject in that faculty area. This year students will study art, drama and media as part of our creative arts curriculum. They will also carousel around our technology subjects of textiles, engineering and food technology. Our year seven curriculum also includes computer science and physical education (PE), which all students study.

Our foundation group in year seven also has the opportunity to study life skills on top of their normal curriculum, to ensure they make the best progress whilst at BCHS.

If you would like more details regarding the curriculum please contact the year team.

Extra curricular

At BCHS we have a large range of extra curricular opportunities available during lunchtimes and also after school.

All of our clubs are free to attend and students who do attend clubs are rewarded with extra achievement points throughout the year. Joining a club can be a great way to meet new friends and is a fantastic way to represent BCHS in fixtures and competitions against other schools. An example of the clubs we run can be found below.

- **CHESS**
- **HOMEWORK**
- **ART**
- **LIBRARY**

- **DEBATING**
- **FILM**
- **CULTURE**

- **FITNESS**
- **BADMINTON**
- **FOOTBALL**
- **CRICKET**

Home learning

At BCHS we recognise that learning does not stop when the school bell rings at the end of the day. It is important for our students to continue their love for learning outside of the classroom. Homework and pre-lesson learning tasks are set by our teachers on digital platforms for students to complete at home. We use Google Classroom to set work for students as this allows parents and guardians to log in and see when work has been set and completed. Each subject area will set homework at different points throughout the week, but it is expected that one piece of homework is completed each night in year seven. Alongside Google Classroom, staff may also set homework and pre-lesson learning tasks on Dr Frost Maths and Seneca.

Students who show a good attitude to their homework are awarded positive achievement points called 'Homework Heroes'. You will be able to see when these have been awarded on the Arbor app.

Travelling to school

BCHS is located near to Royal Blackburn Hospital and is easily accessible by public transport or car.

TRAVELLING BY BUS

There is no dedicated school bus service, however there are bus stops very close to school. There is the Haslingden Road (KFC) stop and Grimshaw Park (Blackburn Central High School) stop that are serviced by the 12A and 12C Blackburn circulars, the 481 Blackburn-Bury and the 22 Shadsworth-Clitheroe Centre. Many other bus services stop at Royal Blackburn Hospital, which is a short walk from school.

TRAVELLING BY CAR

Follow signs for Royal Blackburn Hospital from junction 5 of the M65 or Blackburn town centre. The entrance to school is on Haslingden Road and is sign posted. There is a drop off area within the school grounds but please note that this gets extremely busy and should not be used as a waiting area.





Behaviour expectations

Our behaviour policy at BCHS is very clear and supports our high expectations around uniform and attitude. We have a code of conduct (CoC) that we expect all students to follow and there are endless opportunities for pupils to receive positive acknowledgments.

If a student is unable to follow the CoC at any point during the school day then a negative incident is recorded by staff. In the classroom students are given a reminder and shown which area of the CoC they are not following. A further reinforcement of the CoC is given before students are sent out to reflect. Once a student is sent out to reflect, the negative behaviour incident is logged on Arbor and an automated email alert is sent home to parents to let them know that the student has a 30 minute after school detention.

Students have the opportunity to return to the classroom and continue with their lesson. However, if the misbehaviour continues, a further repeated reminder will be given and then the student will be removed from the lesson and taken to our 'Resolve' room. A further email will be sent home and a 60 minute after school detention served.

In line with our CoC, if students are late, missing equipment or items of uniform, they will receive a negative behaviour point and a 30 minute after school detention.

Repeated failure to follow our CoC will result in further sanctions, ranging from more time spent in our internal exclusion unit, parent meetings or a suspensions.

MOBILE PHONE POLICY

No electronic device, including mobile phones and smart watches, are allowed to be used, seen or heard in school at any time.

Should students be seen with an electronic device they are confiscated and students collect at the end of the day. If they are then caught with a device again they are confiscated and a parent has to come to school to collect.



Code of Conduct

BLACKBURN CENTRAL HIGH SCHOOL CODE OF CONDUCT

AS A STUDENT I WILL:

1

Attend school every day on time wearing correct uniform.
Bring correct equipment for each lesson.

2

Help other students by allowing every teacher to teach and
every learner to learn.

3

Uphold the school's behaviour and expectations policy at all
times.

4

Give my best effort on all tasks and work to my full
potential in all subjects.

5

Find out what opportunities are available to me
and participate where possible.

6

Support the school's ethos by demonstrating mutual respect
and acceptance for all, promoting fundamental British values
and rejecting all forms of discrimination and extremism.

7

Ensure that I use the internet safely and sensibly and follow
the mobile phone policy.

8

Identify career goals and engage in opportunities to become
work ready.



THE WAY WE DO THINGS HERE
We are proud of our school.



Contact us

Your child will have a number of staff they can contact should they have any queries when they start school. Their Progress Tutor will be the first point of contact but they will also have a Head of Year and a Pastoral Manager, all of whom are happy to be contacted by email or telephone or can usually be found in the key stage three office. For general enquiries please contact the school reception on the contact details below.

School reception: 01254 505700
School email: info@bchs.co.uk
School website: www.bchs.co.uk

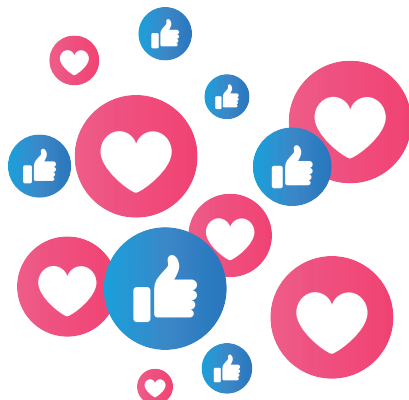
Year 7 Pastoral Manager: Miss Leake (vleake806@bchs.co.uk)
Year 7 Head of Year: Miss Elliott (kelliott247@bchs.co.uk)
Assistant Headteacher for Key Stage 3: Mrs Cliffe (ecliffe600@bchs.co.uk)
SENCO: Miss Davies (jdavies233@bchs.co.uk)

Keep up to date

We regularly post on our social media channels so would urge you to follow us to keep up to date with the latest achievements and developments at school.

You can find us on Facebook, Instagram and X (Twitter). Just search for Blackburn Central High School to find us and make sure to hit that follow button.

We also send out termly newsletters at the end of each term. Please ensure you are registered on Arbor to receive the links to the newsletters.





Term dates

AUTUMN TERM 2024	
Students return	Wed 4 September 2024
Mid term closure	Mon 21-Fri 25 October 2024
Students return	Mon 28 October 2024
Closure (after school)	Fri 20 December 2024
SPRING TERM 2025	
Students return	Mon 6 January 2025
Mid term closure	Mon 17-Fri 21 February 2025
Students return	Mon 24 February 2025
EID closure	Mon 31 March 2025
Students return	Tue 1 April 2025
Closure (after school)	Fri 4 April 2025
SUMMER TERM 2025	
Students return	Wed 23 April 2025
May Day closure	Mon 5 May 2025
Students return	Tue 6 May 2025
Mid term closure	Mon 26-Fri 30 May 2025
Students return	Mon 2 June 2025
EID closure	Fri 6 June 2025
Students return	Mon 9 June 2025
Closure (after school)	Tue 22 July 2025

[illegible]